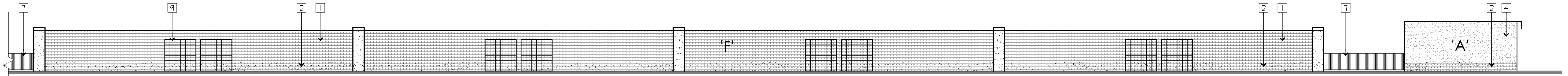
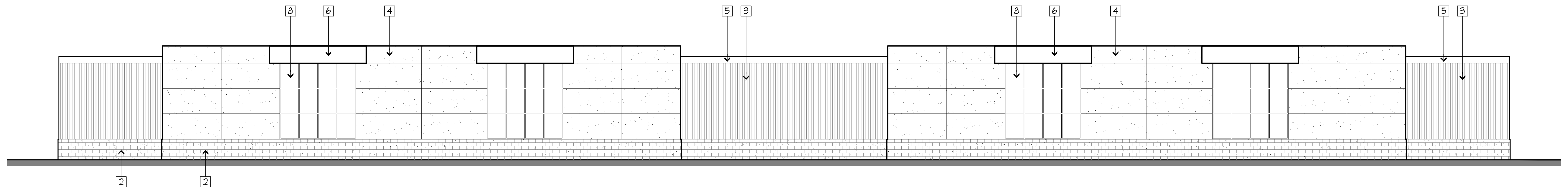


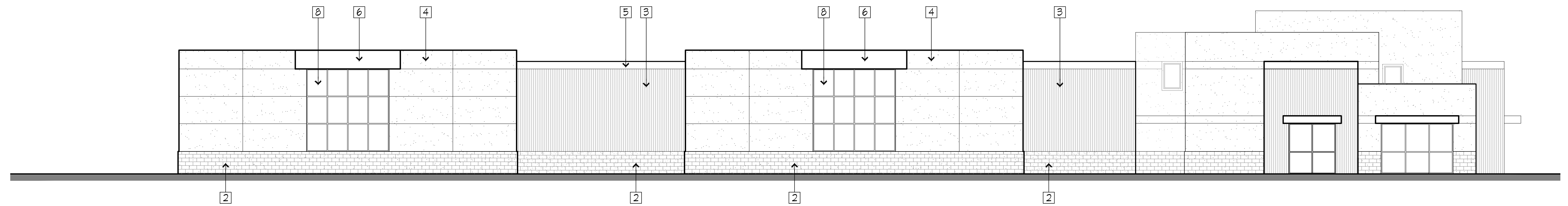
OVERALL SOUTH ELEVATION
SCALE: 1" = 20'-0"



OVERALL NORTH ELEVATION
SCALE: 1" = 20'-0"

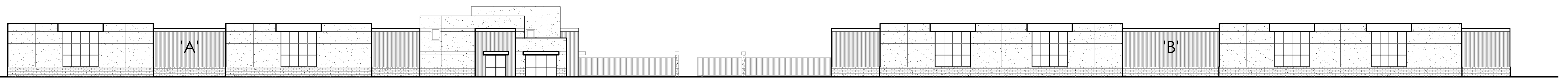


BLDG. 'B' WEST
SCALE: 1" = 10'-0"

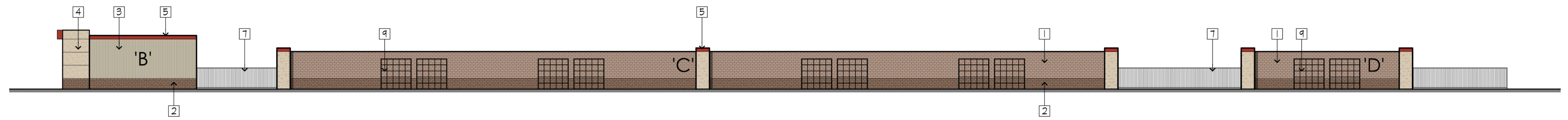


BLDG. 'A' WEST
SCALE: 1" = 10'-0"

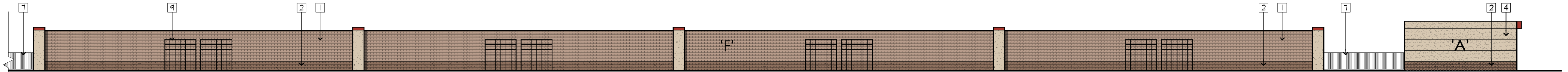
- 1 PRECISION CMU WITH ELASTOMERIC PAINT FINISH: SW # 6087 'TRUSTY TAN'
- 2 SPLIT FACE CMU WITH ELASTOMERIC PAINT FINISH: SW # 6088 'NUT HATCH'
- 3 MBCI VERTICALLY CORRUGATED METAL PANEL: SIGNATURE 200 'LIGHT STONE'
- 4 STUCCO W/ ELASTOMERIC PAINT FINISH: SW # 6085 'SIMPLIFY BEIGE'
- 5 METAL CAP FLASHING WITH PAINT FINISH: SW # 6866 'HEART THROB'
- 6 METAL AWNING WITH PAINT FINISH: SW # 6866 'HEART THROB'
- 7 TUBULAR STEEL FENCE WITH PAINT FINISH: SW # 6160 'BEST BRONZE'
- 8 SPANDREL GLASS: PPG 'SOLAR BRONZE'
- 9 METAL VINE TRELLIS: ANODIZED ALUMINUM



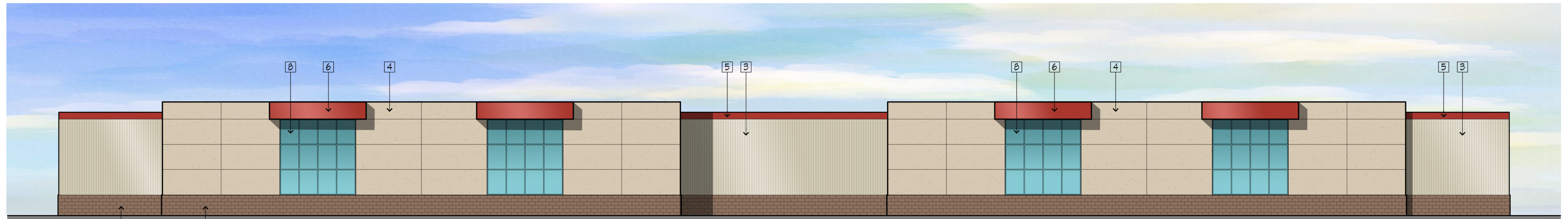
OVERALL WEST ELEVATION
SCALE: 1" = 20'-0"



OVERALL SOUTH ELEVATION
SCALE: 1" = 20'-0"

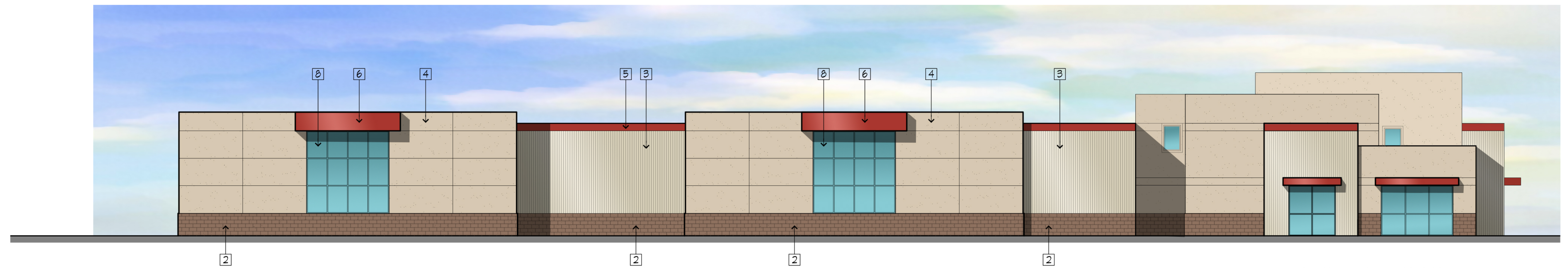


OVERALL NORTH ELEVATION
SCALE: 1" = 20'-0"

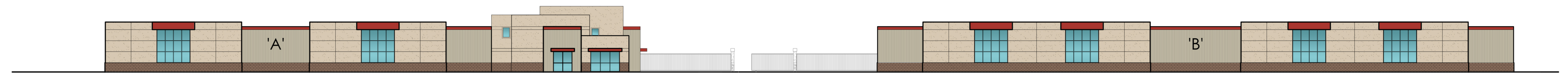


BLDG. 'B' WEST
SCALE: 1" = 10'-0"

- 1 PRECISION CMU WITH ELASTOMERIC PAINT FINISH: SW # 6087 'TRUSTY TAN'
- 2 SPLIT FACE CMU WITH ELASTOMERIC PAINT FINISH: SW # 6088 'NUT HATCH'
- 3 MBCI VERTICALLY CORRUGATED METAL PANEL: SIGNATURE 200 'LIGHT STONE'
- 4 STUCCO W/ ELASTOMERIC PAINT FINISH: SW # 6085 'SIMPLIFY BEIGE'
- 5 METAL CAP FLASHING WITH PAINT FINISH: SW # 6866 'HEART THROB'
- 6 METAL AWNING WITH PAINT FINISH: SW # 6866 'HEART THROB'
- 7 TUBULAR STEEL FENCE WITH PAINT FINISH: SW # 6160 'BEST BRONZE'
- 8 SPANDREL GLASS: PPG 'SOLAR BRONZE'
- 9 METAL VINE TRELLIS: ANODIZED ALUMINUM



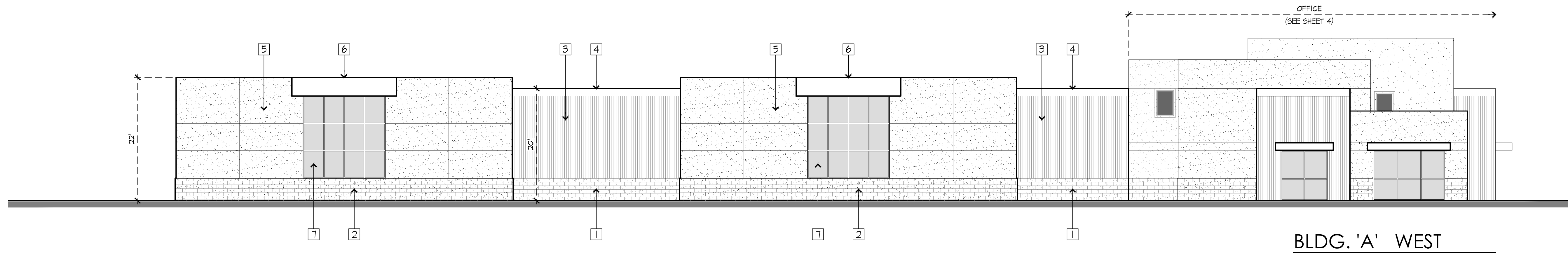
BLDG. 'A' WEST
SCALE: 1" = 10'-0"



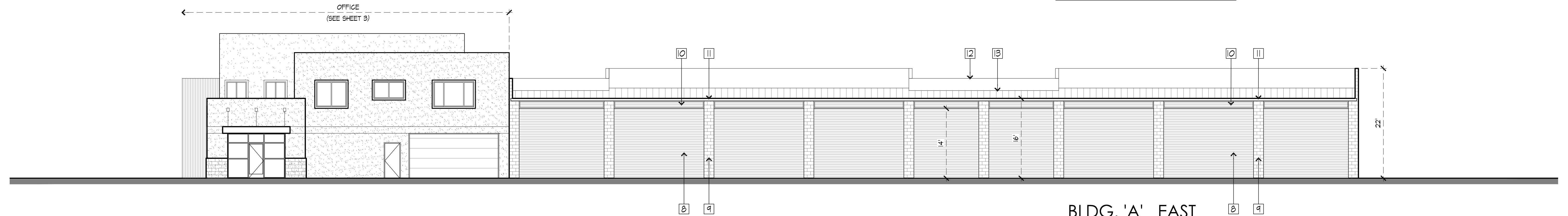
OVERALL WEST ELEVATION
SCALE: 1" = 20'-0"

ELEVATION KEYNOTES

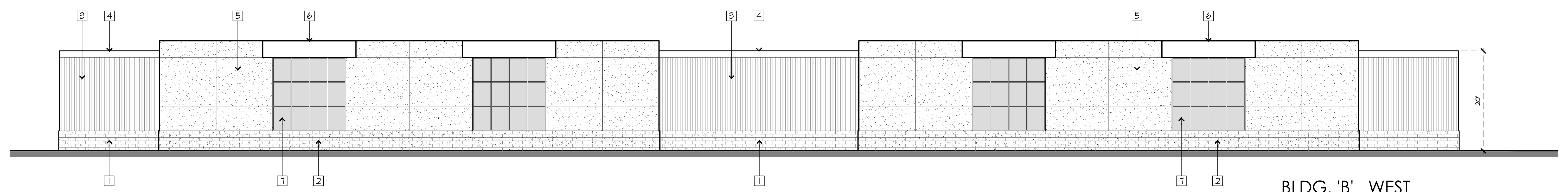
1. PRECISION CMU WALL WITH ELASTOMERIC PAINT FINISH
2. SPLIT FACE CMU WALL WITH ELASTOMERIC PAINT FINISH
3. VERTICAL CORRUGATED METAL SIDING
4. SMOOTH METAL CAP BAND
5. STUCCO WITH METAL JOINTS
6. METAL AWNING
7. SPANDREL GLASS
8. METAL ROLL-UP DOOR
9. PRECISION CMU PILASTER WITH ELASTOMERIC PAINT FINISH
10. METAL DOOR TRANSOM
11. METAL GUTTER
12. PARAPET BEYOND
13. GALVALUME METAL ROOF
14. FIRE HYDRANT LOCATION



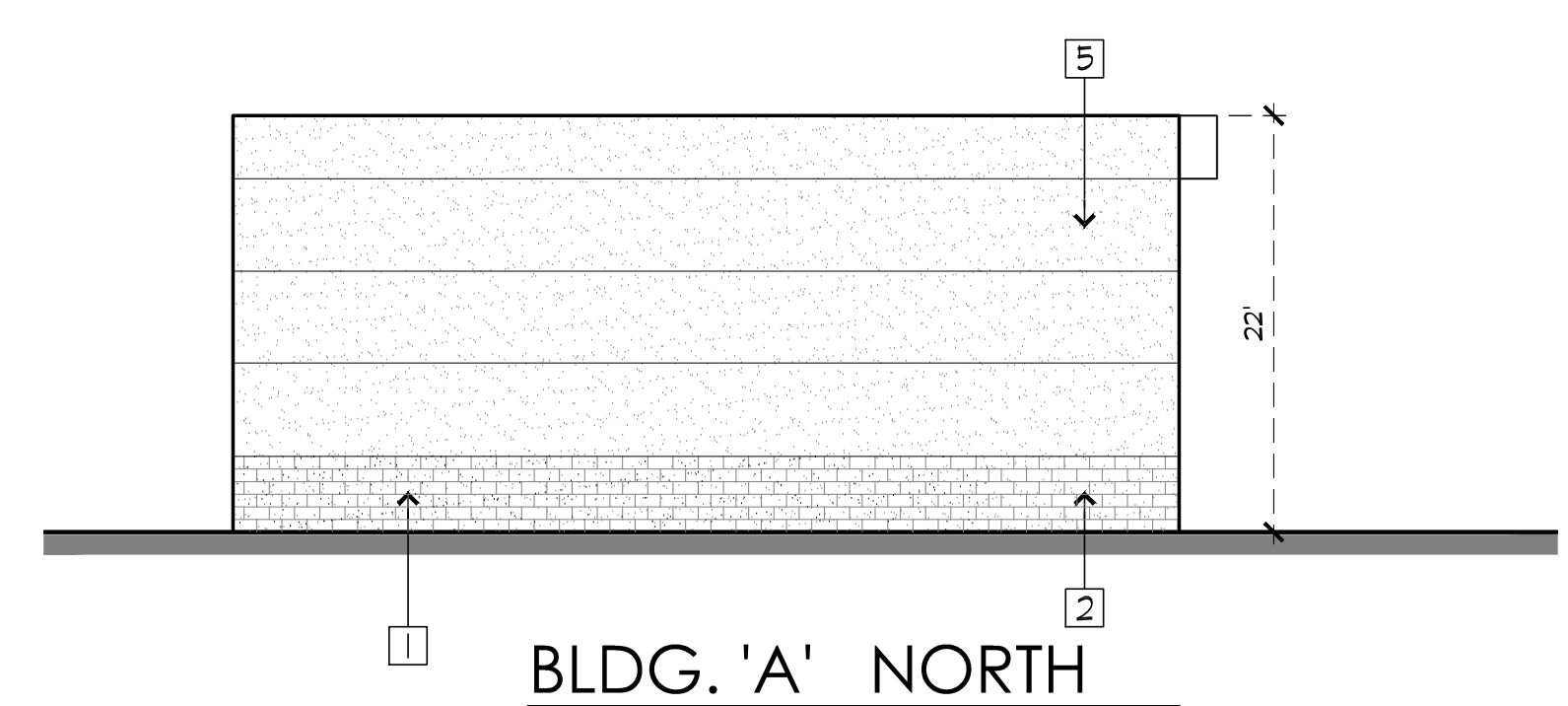
BLDG. 'A' WEST



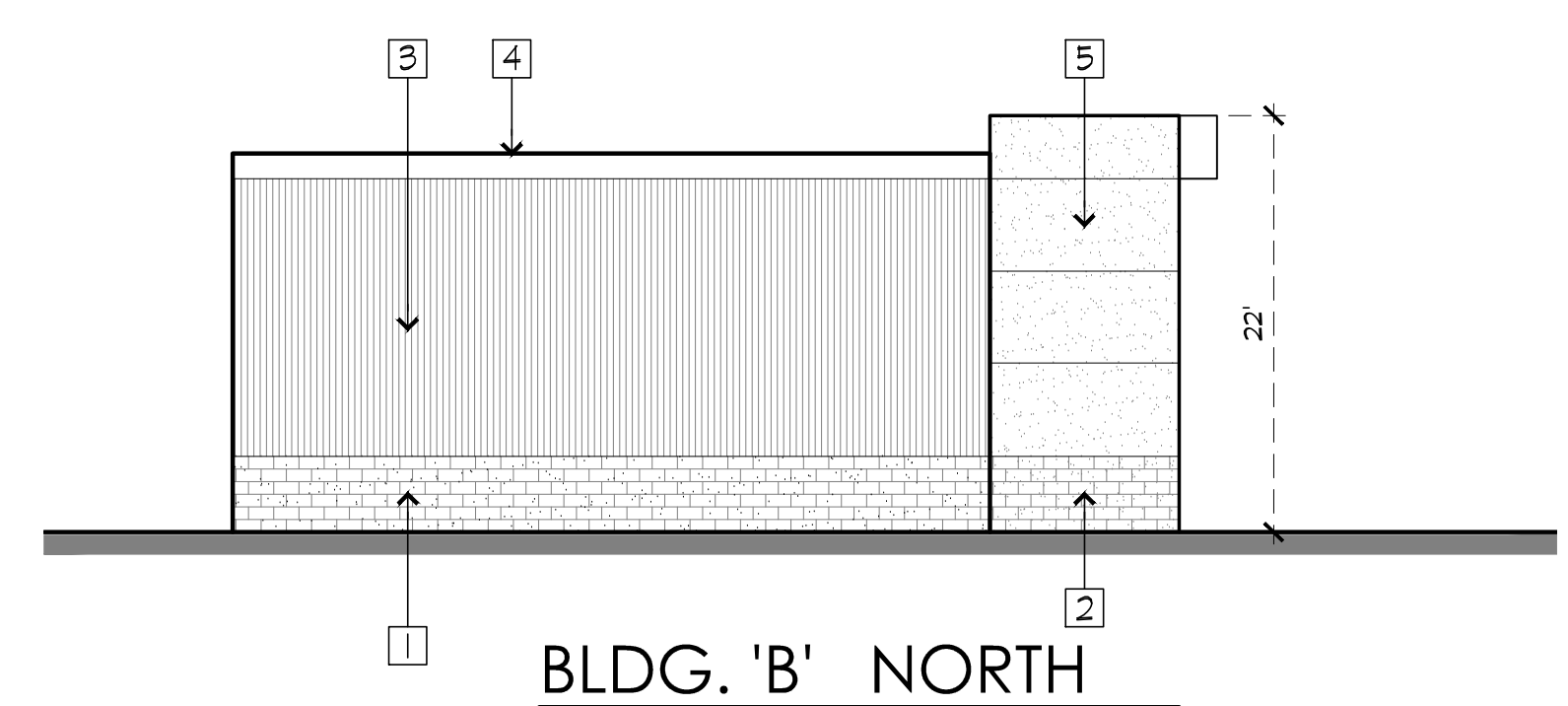
BLDG. 'A' EAST



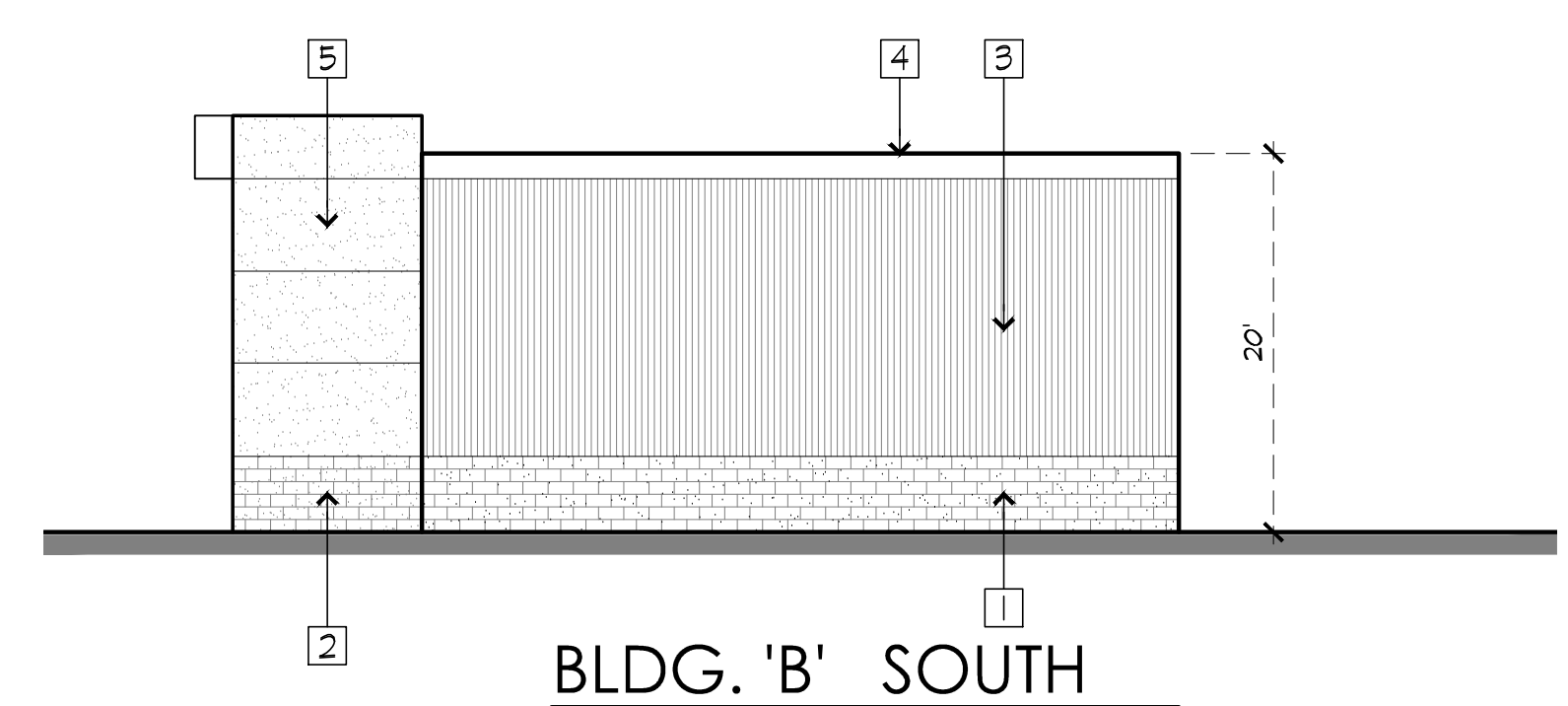
BLDG. 'B' WEST



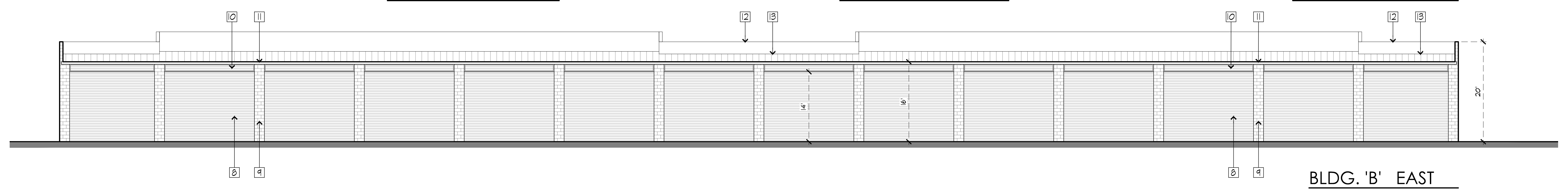
BLDG. 'A' NORTH



BLDG. 'B' NORTH



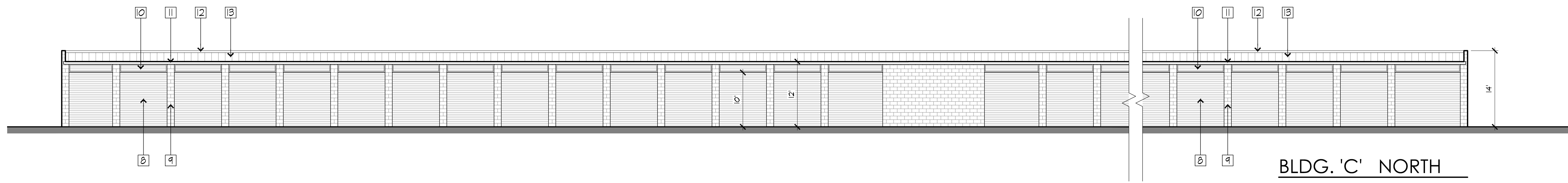
BLDG. 'B' SOUTH



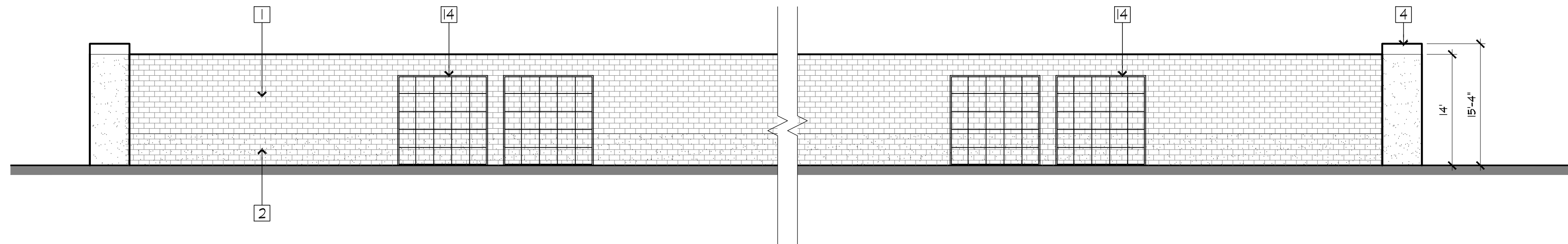
BLDG. 'B' EAST

ELEVATION KEYNOTES

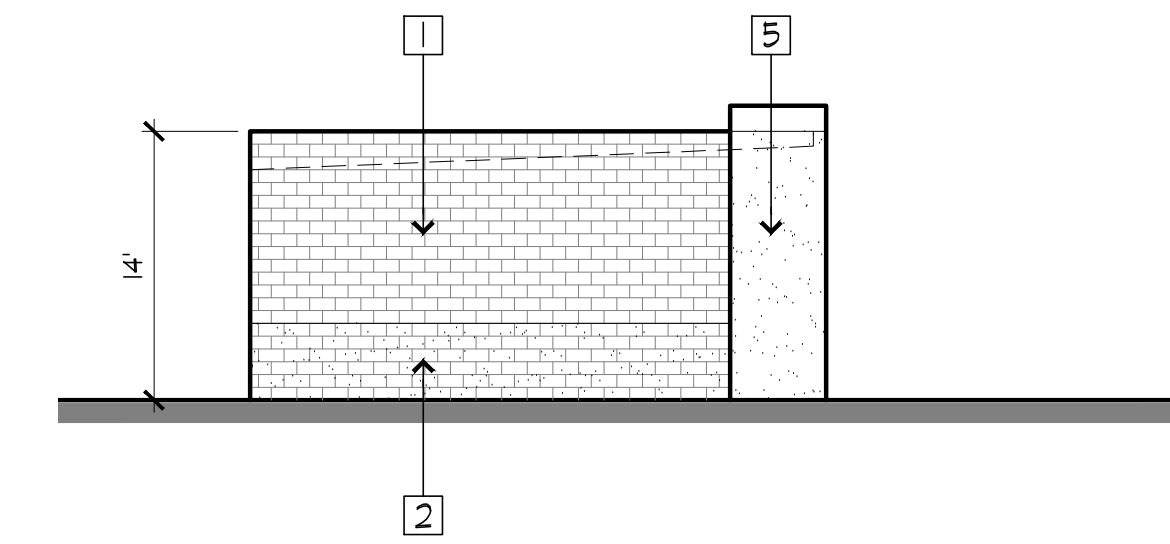
1. PRECISION CMU WALL WITH ELASTOMERIC PAINT FINISH
2. SPLIT FACE CMU WALL WITH ELASTOMERIC PAINT FINISH
3. VERTICAL CORRUGATED METAL SIDING
4. SMOOTH METAL CAP BAND
5. STUCCO WITH METAL JOINTS
6. METAL AWNING
7. SPANDREL GLASS
8. METAL ROLL-UP DOOR
9. PRECISION CMU PILASTER WITH ELASTOMERIC PAINT FINISH
10. METAL DOOR TRANSOM
11. METAL GUTTER
12. PARAPET BEYOND
13. GALVALUME METAL ROOF
14. METAL VINE TRELLIS



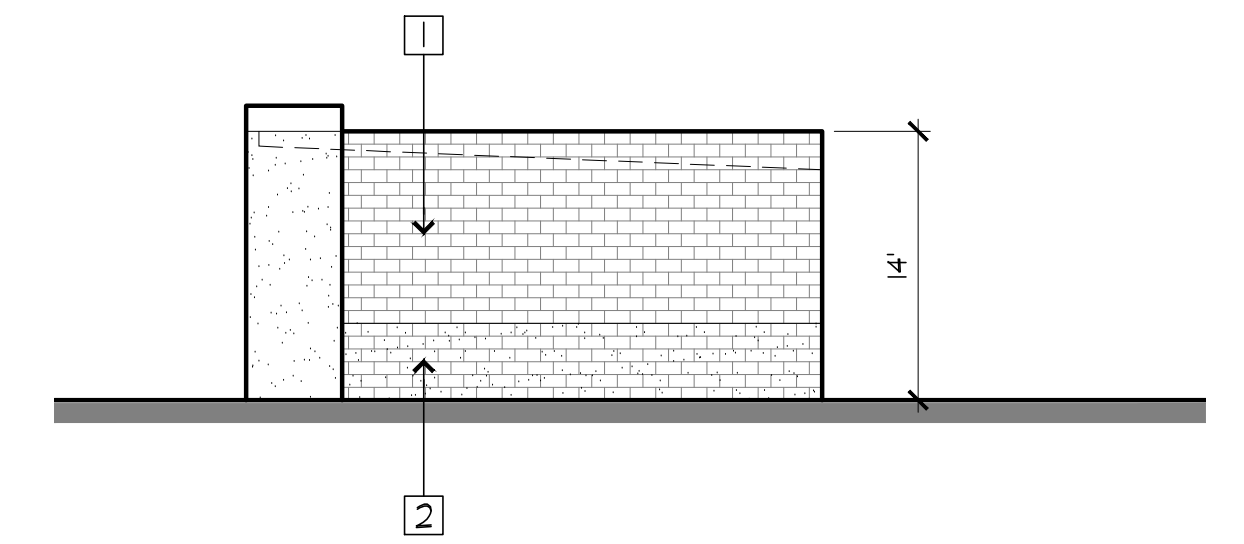
BLDG. 'C' NORTH



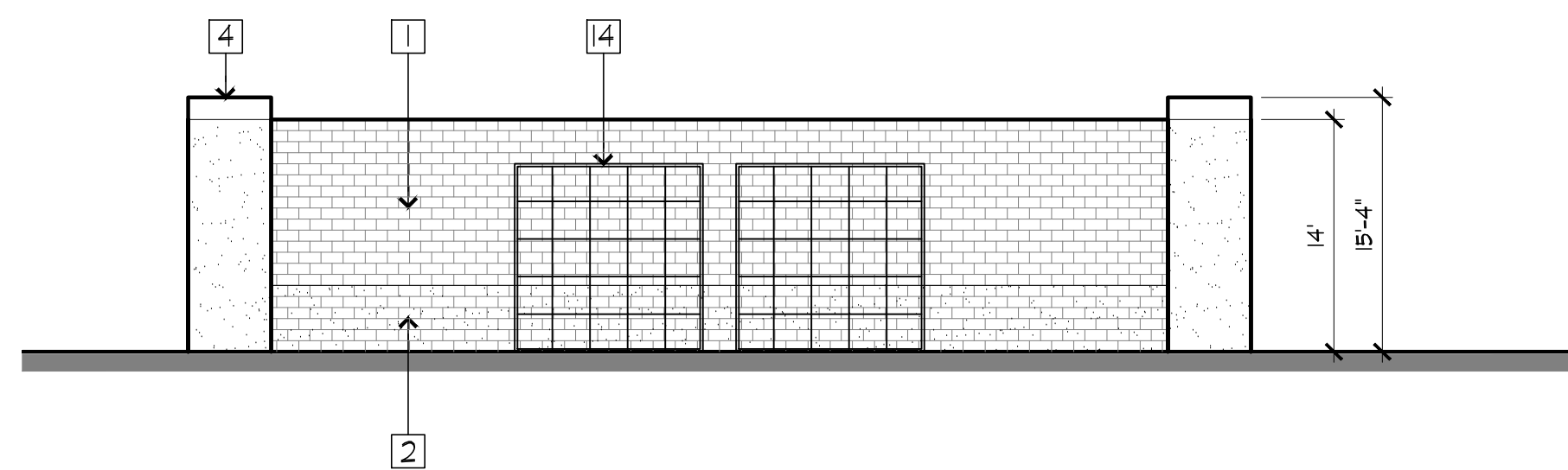
BLDG. 'C' SOUTH



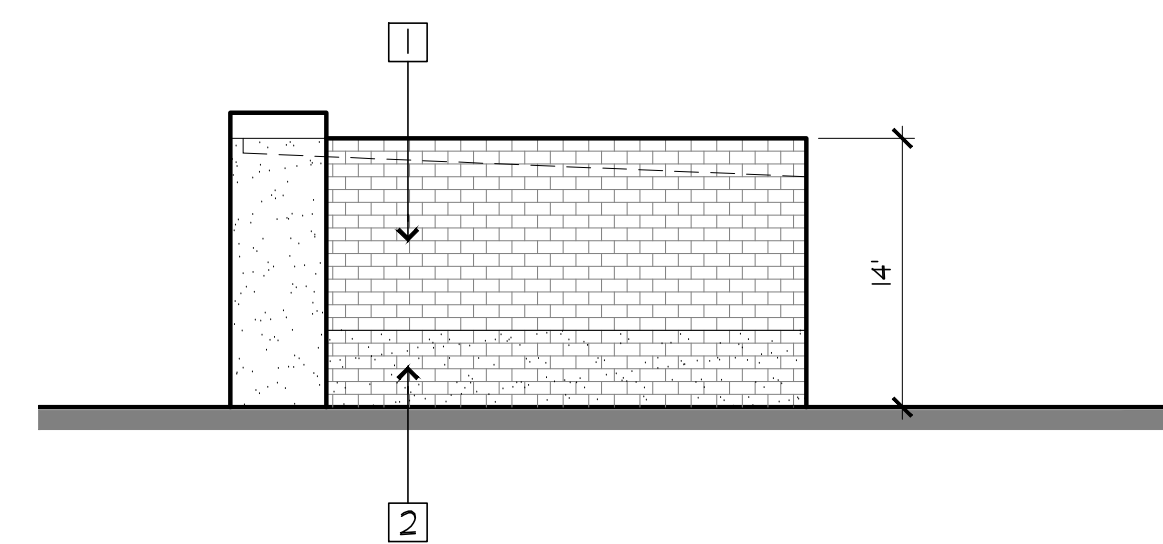
BLDG. 'C' WEST



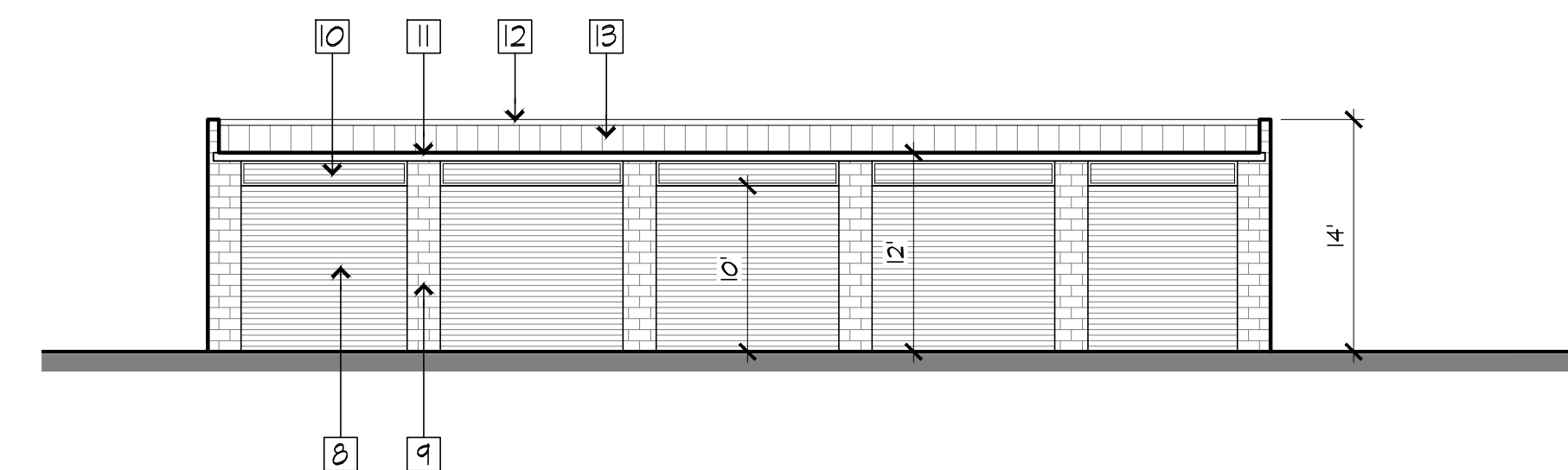
BLDG. 'C' EAST



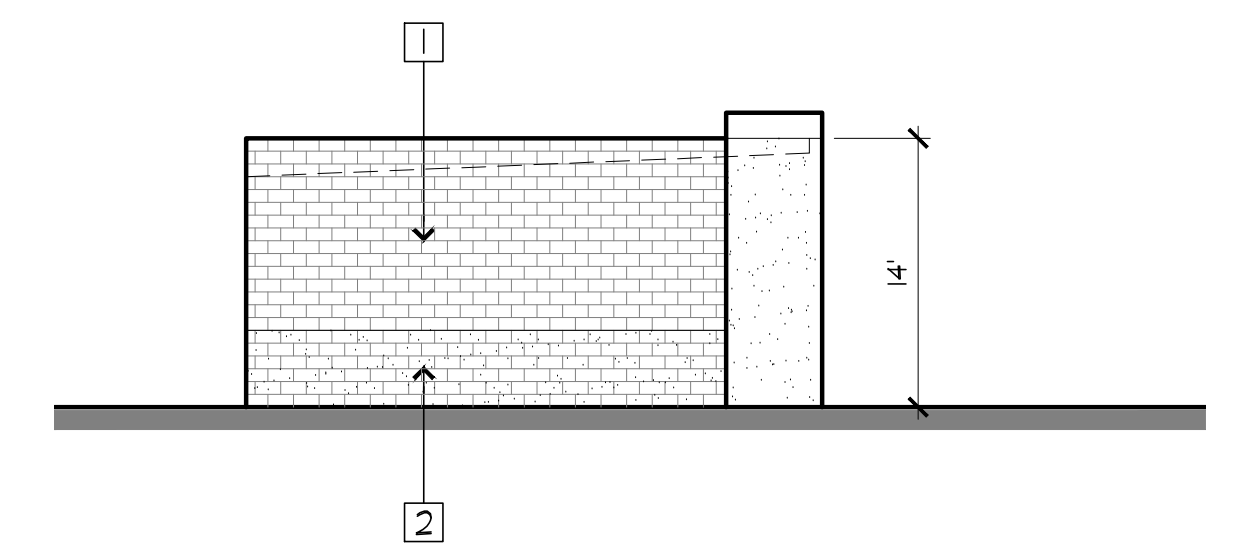
BLDG. 'D' SOUTH



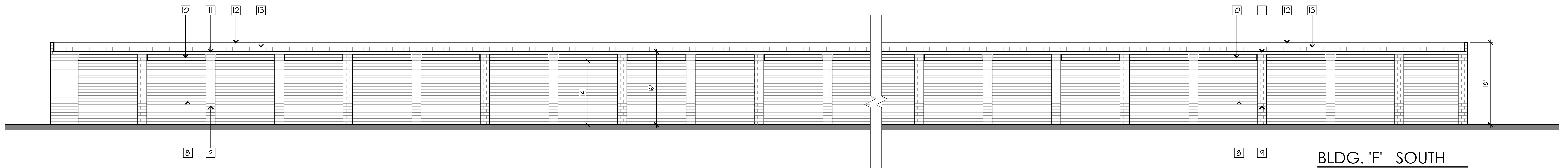
BLDG. 'D' EAST



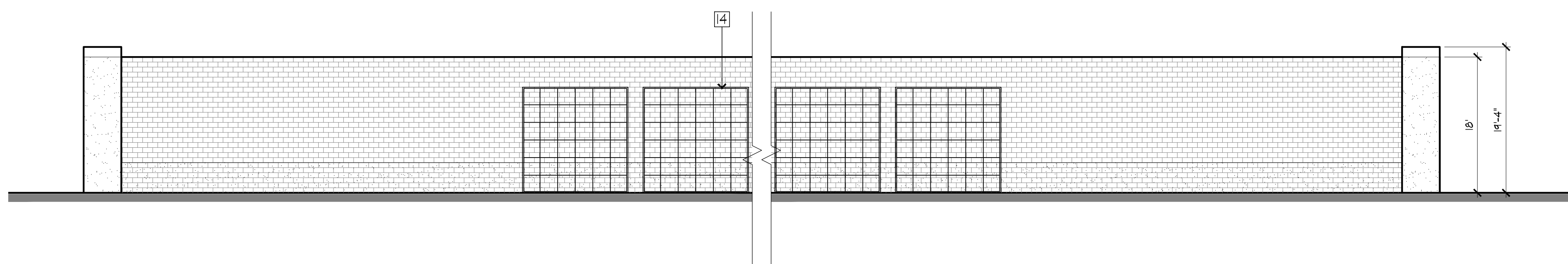
BLDG. 'D' NORTH



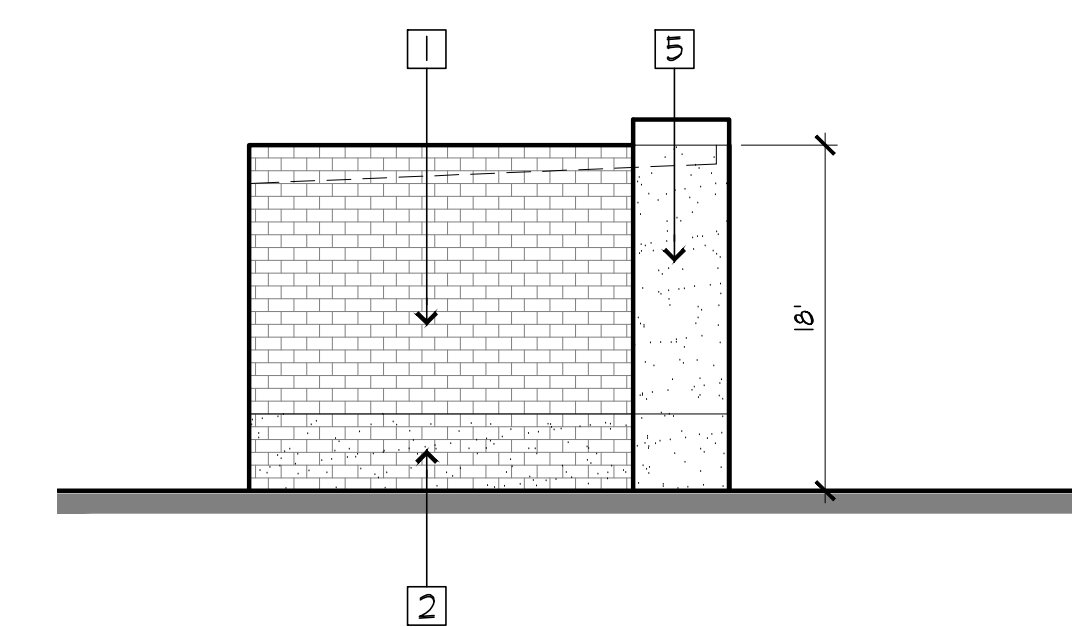
BLDG. 'D' WEST



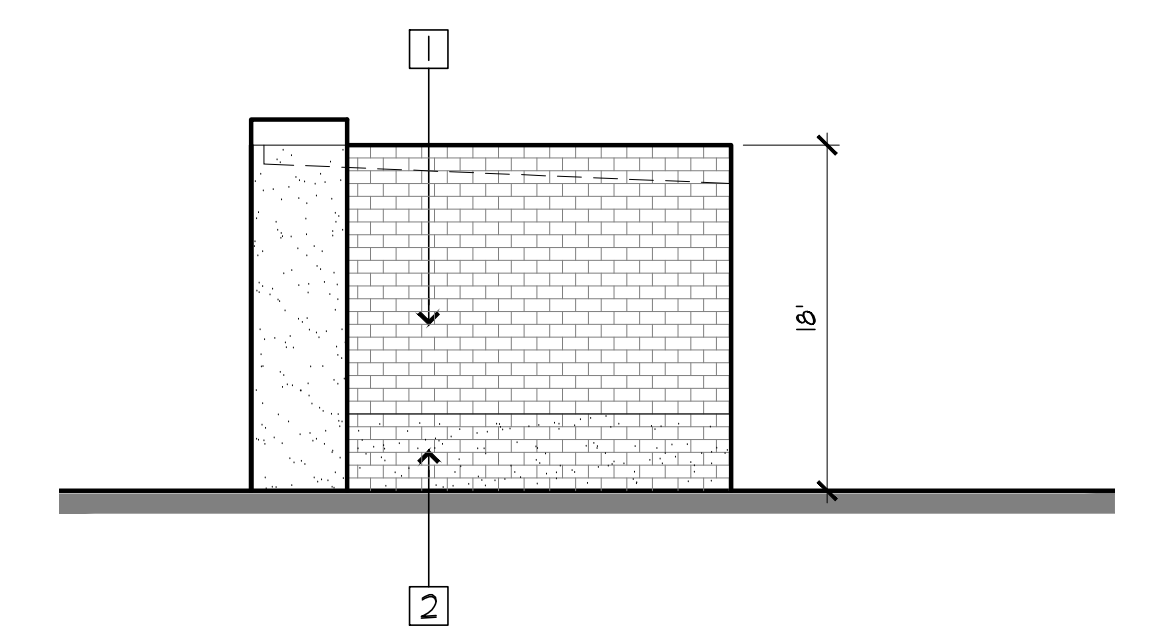
BLDG. 'F' SOUTH



BLDG. 'F' NORTH



BLDG. 'F' EAST



BLDG. 'F' WEST

ELEVATION KEYNOTES

1. CMU WALL WITH ELASTOMERIC PAINT FINISH
2. METAL HALLWAY SWING DOOR
3. CMU DOOR PILASTER WITH ELASTOMERIC PAINT FINISH
4. METAL ROLL-UP DOOR
5. METAL TRANSOM OVER DOOR
6. METAL GUTTER
7. STANDING SEAM METAL ROOF (TYP.)
8. TOP OF PARAPET BEYOND

